

American Valor

Quilt & Pillowcase

Quilt designed by Gail Kessler
Finished size: 64½" x 70"
Pillowcase designed by Jean Ann Wright

Fabrics by Jo Morton



makower uk

1384 Broadway • New York, NY 10018

(800) 223-5678

www.andoverfabrics.com



Andover Fabrics is honored to make a financial contribution to Quilts of Valor Foundation. To learn more, contact www.qovf.org to find out how you can participate!

10/12/10

American Valor Quilt

Introducing Andover Fabrics new collection: American Valor by Jo Morton
Quilt designed by Gail Kessler

Quilt finishes 64½" x 70"
20 Pieced Blocks: 7" x 7"

Fabric Requirements

		Yardage	
Fabric A	panels	2¼ yards	4221-B
Fabric B	blocks	½ yard	4223-LB
Fabric C	blocks	½ yard	4223-B
Fabric D*	blocks	½ yard	4223-R
Fabric E	squares and blocks	1 yard	2879-B
Fabric F	squares and blocks	1 yard	2879-R2
Fabric G**	blocks	2⅛ yards	3984-M
Fabric H	blocks	½ yard	3985-M
*Additional fabric required for backing			
**Includes binding			
Fabric D	backing	4⅛ yards	4223-R

Stars and stripes forever! Let your love of country show when you make this throw quilt. The piecing is so quick and simple you might make a quilt for each veteran in your family. The graphic prints have stars in three different sizes, and the little stripe is printed on the diagonal to give more movement to the design.

Making and Assembling the Quilt

1. Referring to the Diagram 2, sew one of each color of 43"-long strips in the order shown to make a pieced band. Press seam allowances away from the cream strip. Make 7 bands all alike. Use an acrylic ruler or make a template for a 7½" square. Center the ruler or template on point on a pieced band (Diagram 2), and cut (3) 7½" squares from each band. Cut a total of 20 squares. Handle the blocks carefully as all edges are on the bias.
2. Refer to the Quilt Diagram throughout the assembly. Sew 10 pieced blocks side by side to make a pieced panel, rotating the blocks as shown. Make 2 panels, noting that the panels are mirror images of each other. Be careful not to stretch the blocks as you sew.
3. Sew 5 navy 7½" squares alternating with 5 red 7½" squares to make a pieced panel. Make 2.
4. Referring to the diagram and quilt photograph, arrange and sew the strips and pieced panels in the order shown. Do not allow the pieced blocks to stretch as you sew them to the 70½"-long star fabric panels. Use a walking foot if available to prevent the blocks from stretching, or pin carefully before stitching. Trim the panels as needed to even the top and bottom edges.

Finishing the Quilt

5. Layer quilt with batting and backing. Quilt in the ditch along all seams. Quilt around the printed stars in the panels, and quilt diagonal lines or other overall motifs in the areas between the printed stars. Bind to finish the quilt.

Cutting Directions

Note: Strips for panels are cut the exact lengths required plus ¼" seam allowances.

Fabric A Cut (2) navy strips 7" x 70½", fussy cut lengthwise to center stars
Cut (2) red strips 7" x 70½", fussy cut lengthwise to center stars
Cut (1) cream strip 7" x 70½", fussy cut lengthwise to center stars

Fabric B Cut (7) strips 1¾" x 43"

Fabric C* Cut (7) strips 2" x 43"

Fabric D Cut (7) strips 2" x 43"

Fabric E Cut (10) squares 7½" x 7½"
Cut (7) strips 2¾" x 43"

Fabric F Cut (10) squares 7½" x 7½"
Cut (7) strips 1½" x 43"

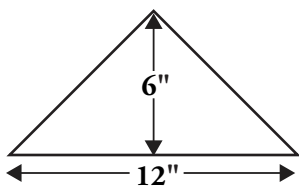
Fabric G Cut (2) strips 2½" x 70½", cut lengthwise
Cut (5) strips 2½" x 60" for binding, cut lengthwise
Cut (7) strips 1¾" x 43", cut lengthwise

Fabric H Cut (7) strips 2¼" x 43"

*Additional fabric required for backing

Backing Cut (2) panels 39" x 73", pieced to fit quilt top with 4" overlap on all sides.

American Valor Quilt



Pillowcase Template
(measurements include seam allowances)

Diagram 1

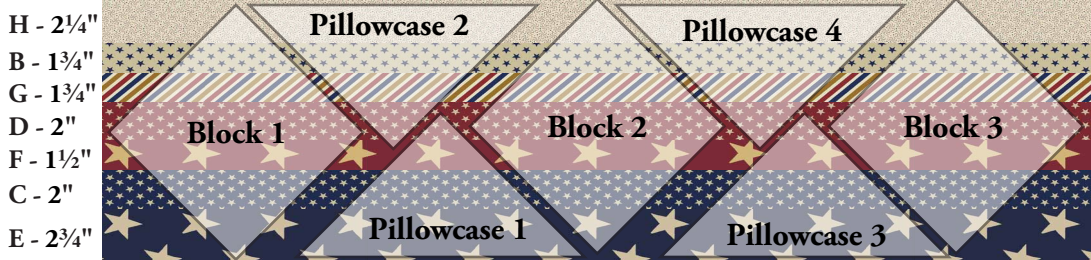
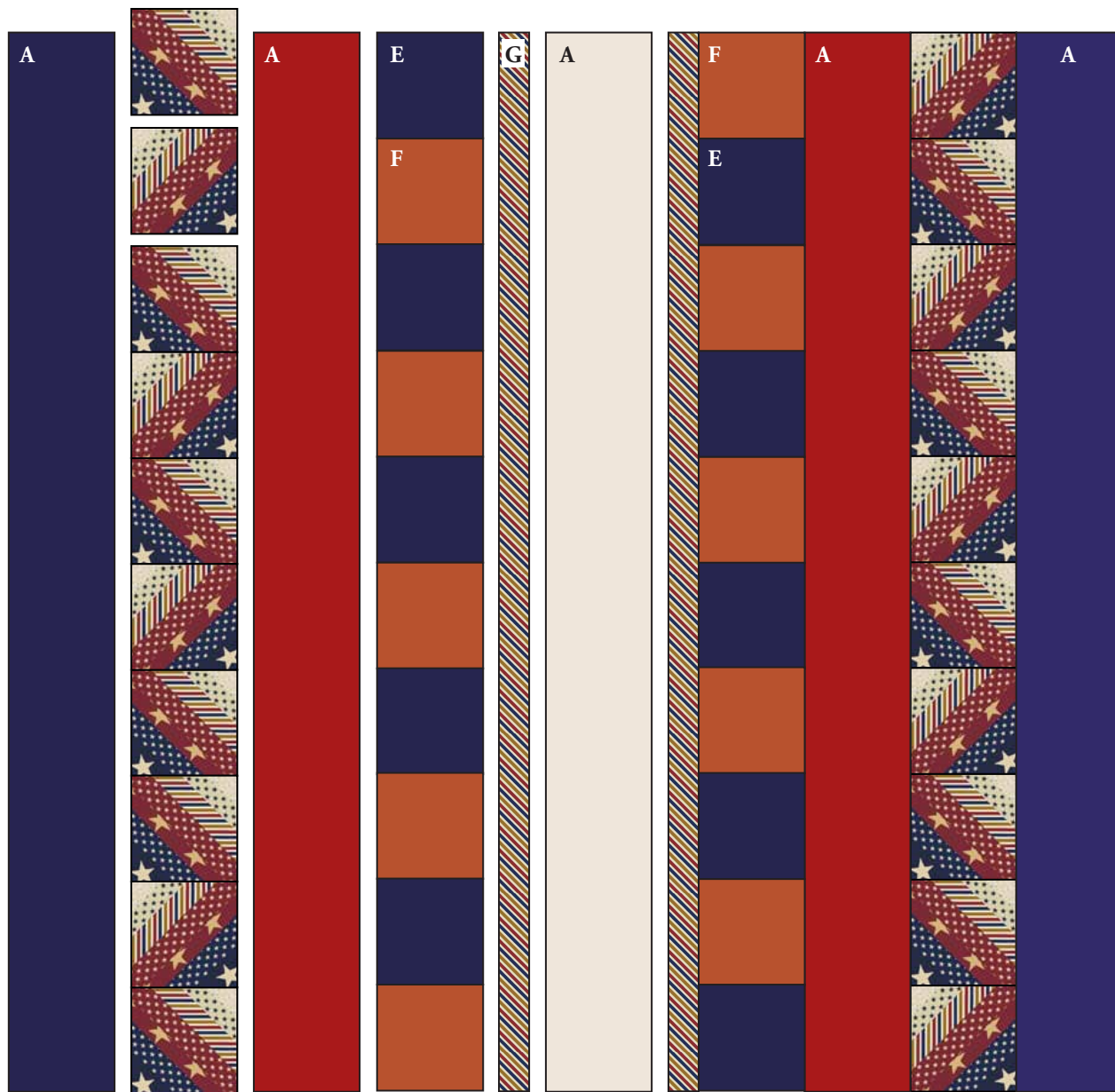


Diagram 2



Quilt Diagram

American Valor Pillowcase

Fabric Requirements for one Pillowcase

	Yardage	Fabric
Fabric A	1 yard	4223-R
5 fabrics	1/8 yard each, or use leftovers from quilt	
2 fabrics	1/4 yard each, or use leftovers from quilt	

Cutting Directions for One Pillowcase

Note: WOF designates the width of fabric from selvedge to selvedge (approximately 43"-44" wide).

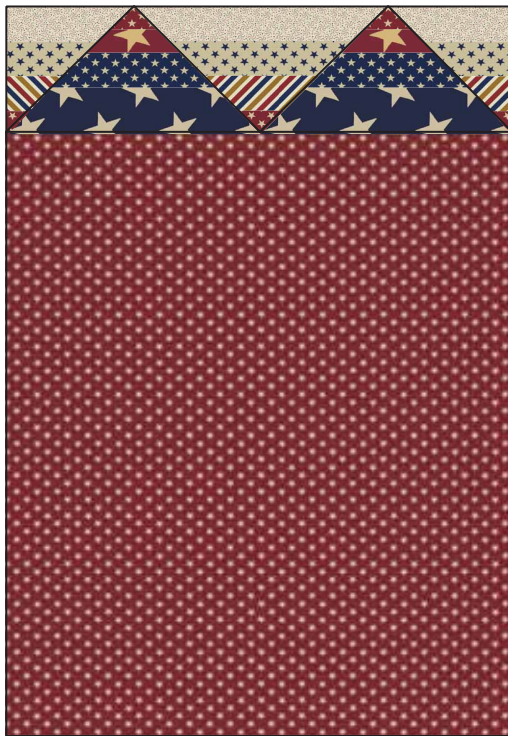
Fabric A Cut (1) rectangle 25½" x WOF for body of pillowcase
Cut (1) rectangle 6" x WOF for lining

7 Fabrics Cut 2 strips from each as shown in Diagram 2

OR
Pieced Bands Cut (8) triangles (see Diagrams 1 and 2)



Diagram 3



Pillowcase Diagram

Pillowcase finishes approximately 21" x 30"

Make the American Valor Quilt even more special with pillowcases that use leftovers from the quilt. These directions are for making one pillowcase, but there are enough leftover pieced bands from the quilt to make two pillowcases. Purchase one yard of fabric for the body of each pillowcase.

Making the Pillowcase

1. Referring to Diagram 1, make a template of the large triangle. Note: If you haven't made the pieced bands for the American Valor quilt, join 7 strips edge to edge in the order shown (Diagram 2). Make 2 bands. You need 8 triangles, 4 from the bottom of the strip and 4 from the top of the strip, to make the pieced triangle edging for the pillowcase. Cut the triangles from the leftovers of the quilt's pieced bands or from the newly made bands.
2. Cut one of the lighter pieced triangles in half vertically. Referring to Diagram 3, join the 7 triangles side by side, rotating them as shown. Sew a half triangle to each end.
3. Trim the Fabric A patches (the pillowcase body and the lining) and the pieced triangle band the same width so that they match (approximately 43").
4. With right sides together, sew the large Fabric A patch to the "dark" side of the pieced triangle band, and sew the Fabric A lining to the "light" side of the band. Press the seam allowances toward the lining.
5. Fold the unit in half lengthwise, with right sides together, aligning and pinning the seams of the band. Sew along the bottom and the side of the pillowcase/pieced band/lining, leaving the top (lining) end open. If you wish, finish the raw edges of the seam allowance with a zigzag stitch. Press the seam allowance to one side.
6. Press under the raw edge of the lining ¼". Turn the pillowcase right side out. Turn the lining to the inside of the band so right sides of both are showing. Press along the stitching line. Topstitch ⅛" from fold line to keep the lining from being seen. Stitch the edge of the lining over the seam allowance of the band to finish the pillowcase.

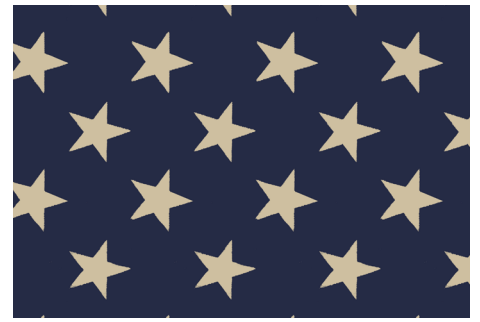
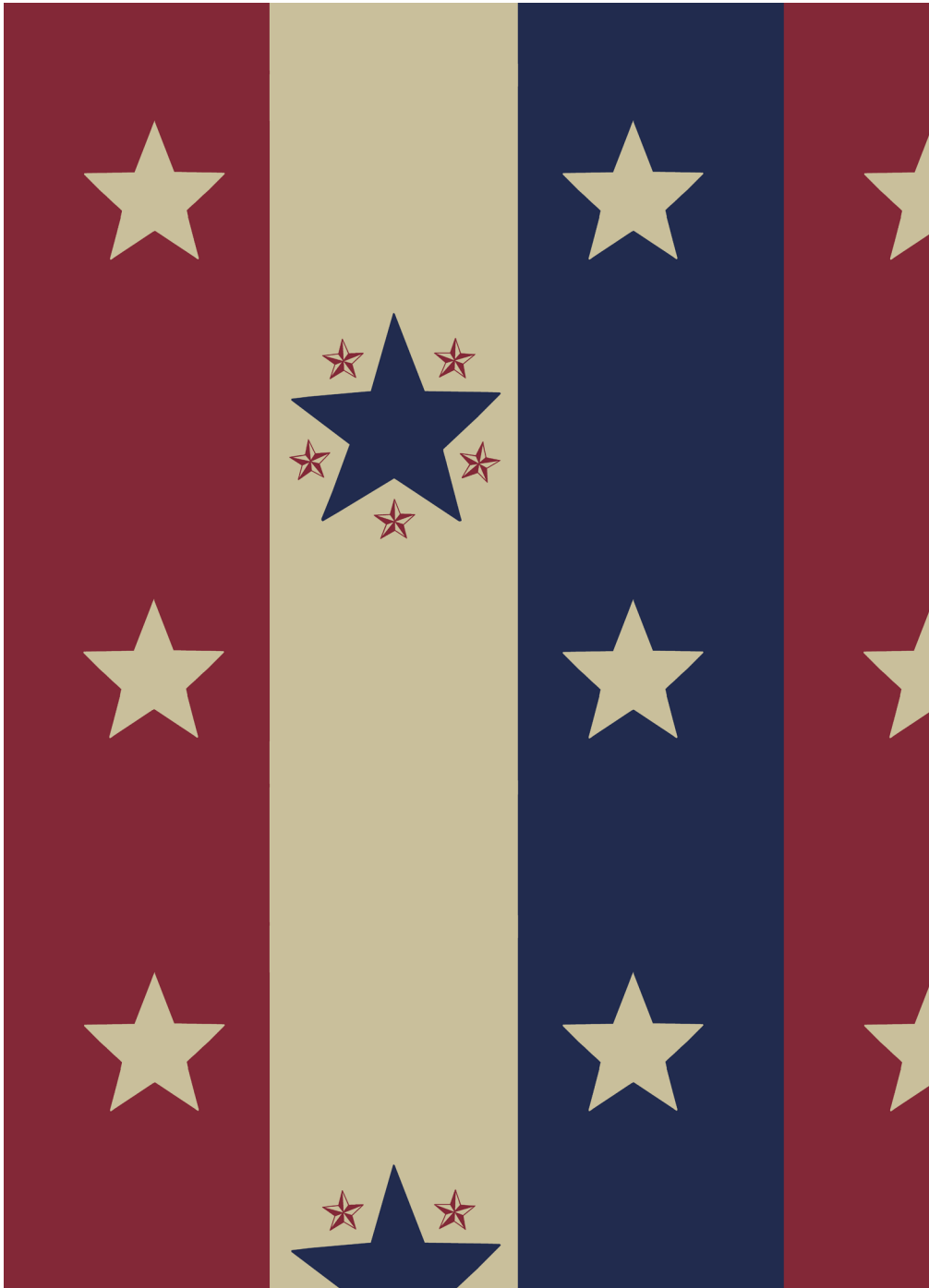
1384 Broadway
New York, NY 10018
(800) 223-5678
www.andoverfabrics.com

American Valor

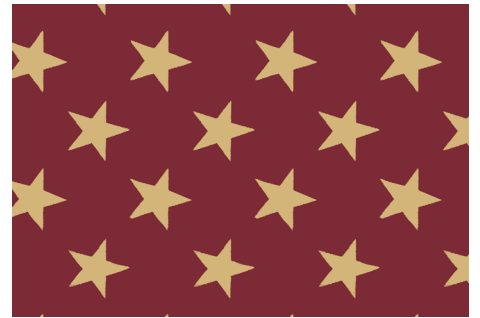
by Jo Morton



makower uk[®]



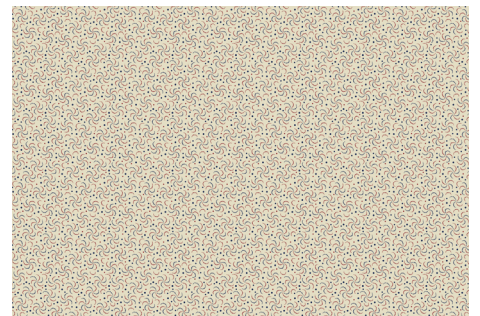
2879-B



2879-R2

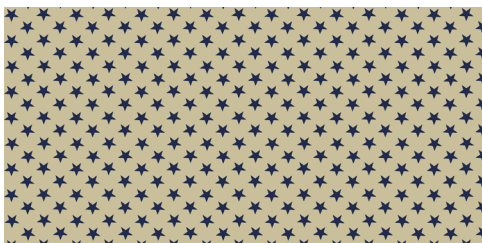


3984-M



3985-M

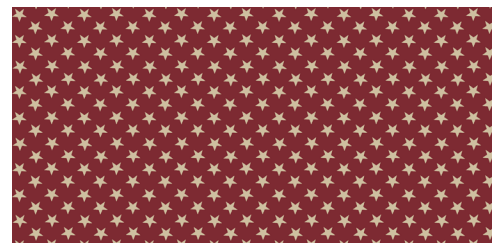
4221-B



4223-LB



4223-B



4223-R